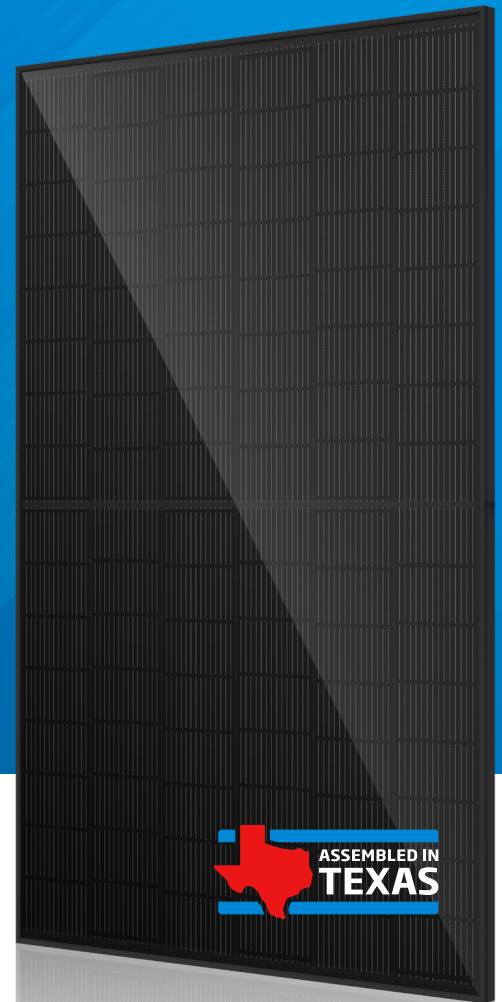


## HIGHER POWER & HIGHER EFFICIENCY IN A COMPACT & DURABLE DESIGN

Maximum power output **435W**

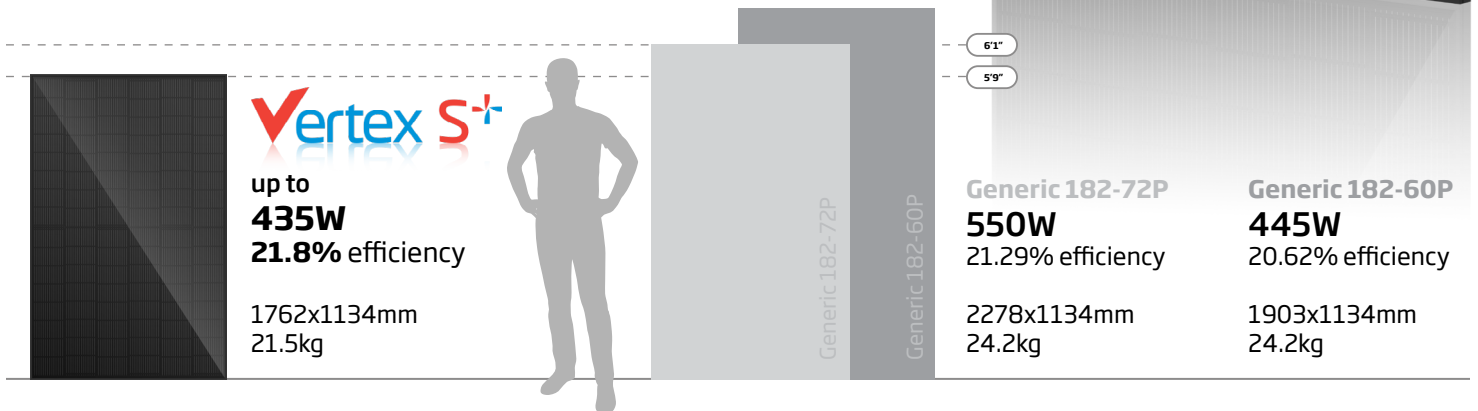
Maximum efficiency **21.8%**

- N type TOPCon technology with 210mm innovative platform
- 3.2mm front glass / back sheet structure
- Higher power, bigger energy gain
- Outstanding reliability and safety
- 25 years product warranty, 25 years power warranty
- 3% Lower carbon emission in production



## Pack More Power Per Roof for Lower BoS Costs and Better Value

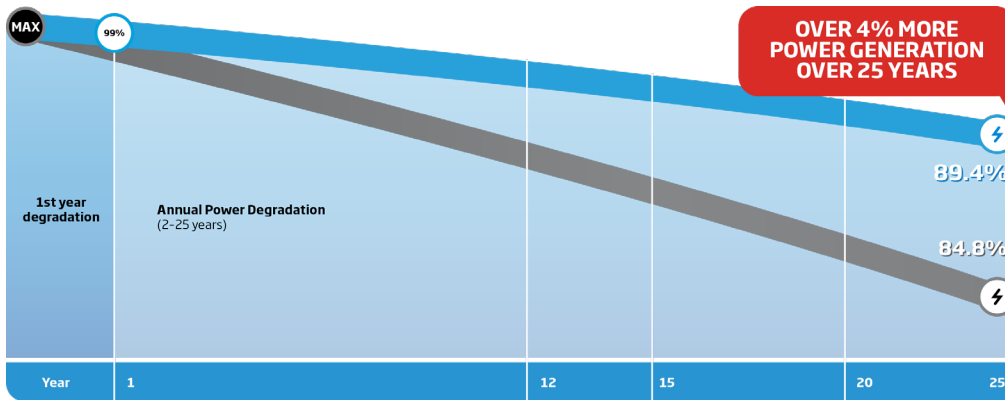
**SMALL IN SIZE, BIG ON POWER**



\*Based on 32 modules in 2 rows of 16 columns with 25-year power generation on a south-facing sloping rooftop that's 16.7m x 5.5m.

# Long Guaranteed Product Lifecycle

Lower degradation, higher power generation, and longer product warranty



1<sup>st</sup> Year Degradation

**1%**

Annual Power Attenuation

**0.4%**

**TrinaProtect**

25-Year Product and Power Warranty

- Vertex S+
- Mainstream Module

## Outstanding Mechanical Load

Improved design features, including stronger material strength, thicker frame profile, and larger frame chamber to disperse loading pressure, ensure the Vertex S+ module's reliable and excellent mechanical performance in extreme weather conditions.



Positive mechanical load is 6000PA with snow thickness of 50cm



Pass 35mm Hail Test according to IEC61215-2:2016



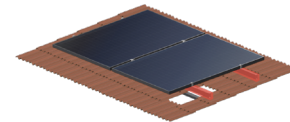
Negative mechanical load is 5400PA



Low temperature coefficient: -0.29%/°C (compared to P-PERC -0.34%/°C)

## Ideal Balance Between Power, Size, and Weight

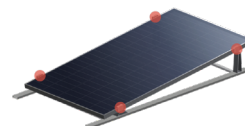
**FASTER & MORE FLEXIBLE INSTALLATIONS**



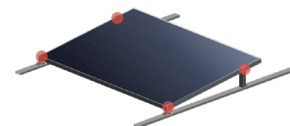
Cross beam



Shared rail



4-point mounting (vertical)



4-point mounting (horizontal)

## Interested in learning more?

Please contact us at [www.trinasolar.com/us/contact-us](http://www.trinasolar.com/us/contact-us)

**Trinasolar**

Trinasolar (U.S.) Inc.  
7100 Stevenson Blvd., Fremont, CA 94538

[www.trinasolar.com/us](http://www.trinasolar.com/us)