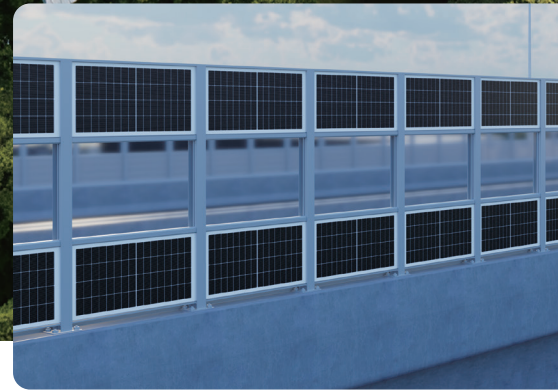




Solar Noise Barrier

A Sustainable Innovation for Roadways

Ideal for surrounding roads near residential areas, schools, hospitals, etc



Multi-Functionality

Innovative integration of PV module and noise barrier
Sound-proofing and sound-absorbing materials
Aesthetic enhancement for roads and highways



Versatile Compatibility

Seamless integration into noise barrier structures
Vertical & angled type, semi-enclosures & full enclosures
Applicable to both new construction and renovations



High Energy Yield

Trinasolar's high-efficiency cells
High power output and low degradation
Added benefit of low-carbon transportation



High Quality

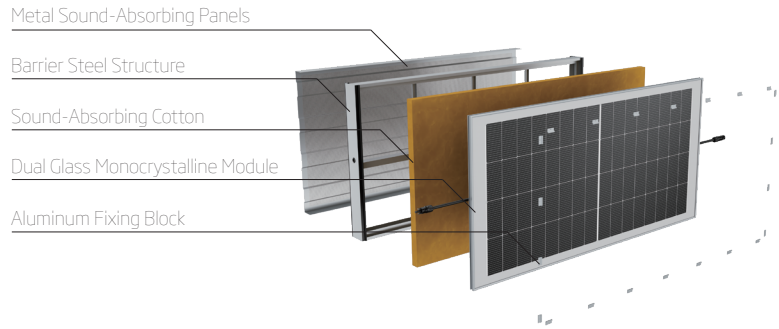
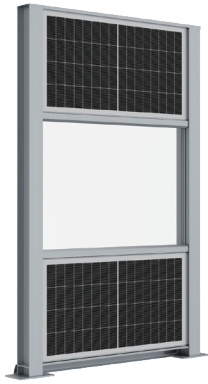
Fire-, wind-, and seismic-resistant
Compatible with PV and noise barrier standards
Durable and weather-resistant

Products and System Certifications



IEC61215 / IEC61730
JT/T 646 | GB 8624
ISO9001: Quality Management System





PRODUCT SPECIFICATION

	TEB-NEGC4GD.40A	TEB-NEGC4GD.40A2
Product Dimensions	L1960*W1000*D116mm (L77.17*W39.37*D4.57 inches)	L1960*W1000*D100mm (L77.17*W39.37*D3.94 inches)
Product Weight	60.6kg (133.6 lb)	60.5kg (133.4 lb)
Metal Sound-Absorbing Panels	Perforated Aluminum Sheet	Perforated Galvanized-Steel Sheet
Module Dimensions	L1923*W961*D30mm (L75.71*W37.83*D1.18 inches)	
Solar Cells	210 N-type TOPCon Monocrystalline	
Front Glass	2.0mm (0.08 inches), High Transmission, AR Coated Heat Strengthened Glass	
Back Glass	2.0mm (0.08 inches), Heat Strengthened Glass (White Grid Glass)	
Connector	TS4 Plus / MC4 / Other	
Packaging Configuration	Modules per box: 9 pieces Modules per 40'container: 198 pieces	Modules per box: 10 pieces Modules per 40'container: 240 pieces

ELECTRICAL DATA (STC)

	320	325	330	335	340	345	350
Peak Power Watts - P_{MAX} (Wp)	320	325	330	335	340	345	350
Power Tolerance - P_{MAX} (W)	±5						
Maximum Power Voltage - V_{MPP} (V)	18.3	18.6	18.8	19.1	19.3	19.5	19.8
Maximum Power Current - I_{MPP} (A)	17.47	17.51	17.55	17.59	17.63	17.67	17.71
Open Circuit Voltage - V_{OC} (V)	22.4	22.7	23.0	23.3	23.6	23.9	24.2
Short Circuit Current - I_{SC} (A)	18.15	18.18	18.21	18.24	18.27	18.30	18.33
Module Efficiency η_m (%)	17.3	17.6	17.9	18.1	18.4	18.7	18.9

STC(Standard Test Conditions): Air Mass AM1.5, Irradiance 1000W/m², Cell Temperature 25°C / Measuring tolerance: ±3%

OPERATING CONDITION

	TEB-NEGC4GD.40A	TEB-NEGC4GD.40A2
Acoustic Performance	Weighted Sound Reduction Index 35dB Noise Reduction Coefficient 0.95	Weighted Sound Reduction Index 35dB Noise Reduction Coefficient 0.9
Wind Load Resistance Performance	±4300Pa	+ 2600Pa/-3500Pa
Impact Resistance	Hold an Impact Of 30J ± 1J	
Burning Behavior Class	Class A	
Operational Temperature	-40~+85°C	
Maximum System Voltage	1500V DC (IEC)	
Max Series Fuse Rating	35A	

TEMPERATURE RATINGS

NOCT (Nominal Operating Cell Temperature)	43°C (±2°C)
Temperature Coefficient of P_{MAX}	-0.29%/°C
Temperature Coefficient of V_{OC}	-0.24%/°C
Temperature Coefficient of I_{SC}	0.04%/°C

WARRANTY

2 Years Noise Barrier Workmanship Warranty
10 Years Module Workmanship Warranty
25 Years Power Warranty
1% First Year Degradation
0.4% Annual Power Attenuation

Please refer to product warranty for details

